

Report Crystal cu **System.Data.OracleClient**

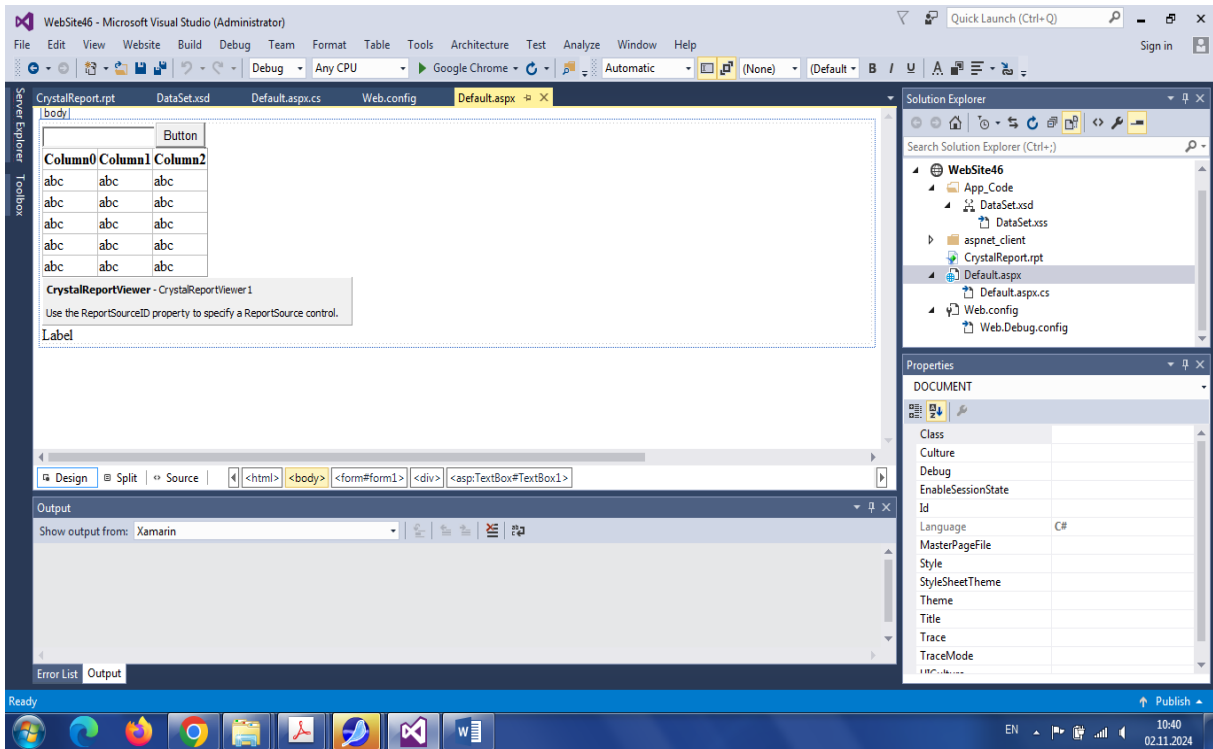


Fig. 1. Controale adaugate in mod Design in fisier aspx

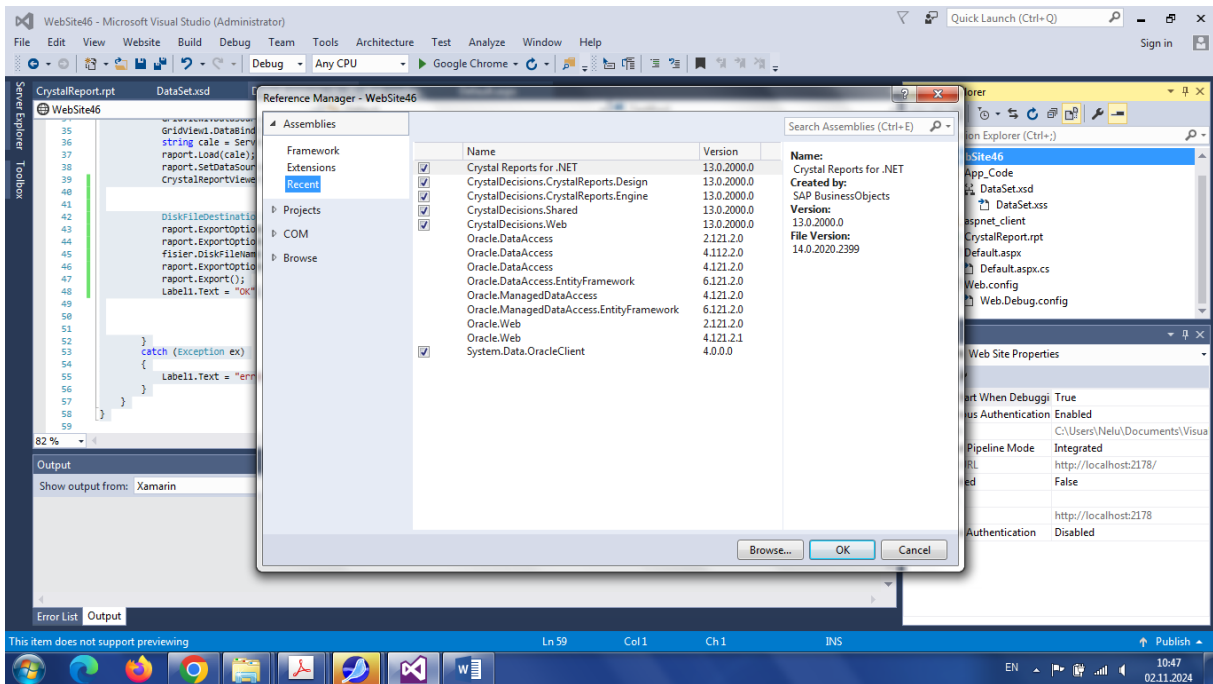


Fig. 2. **Add -> Reference...**

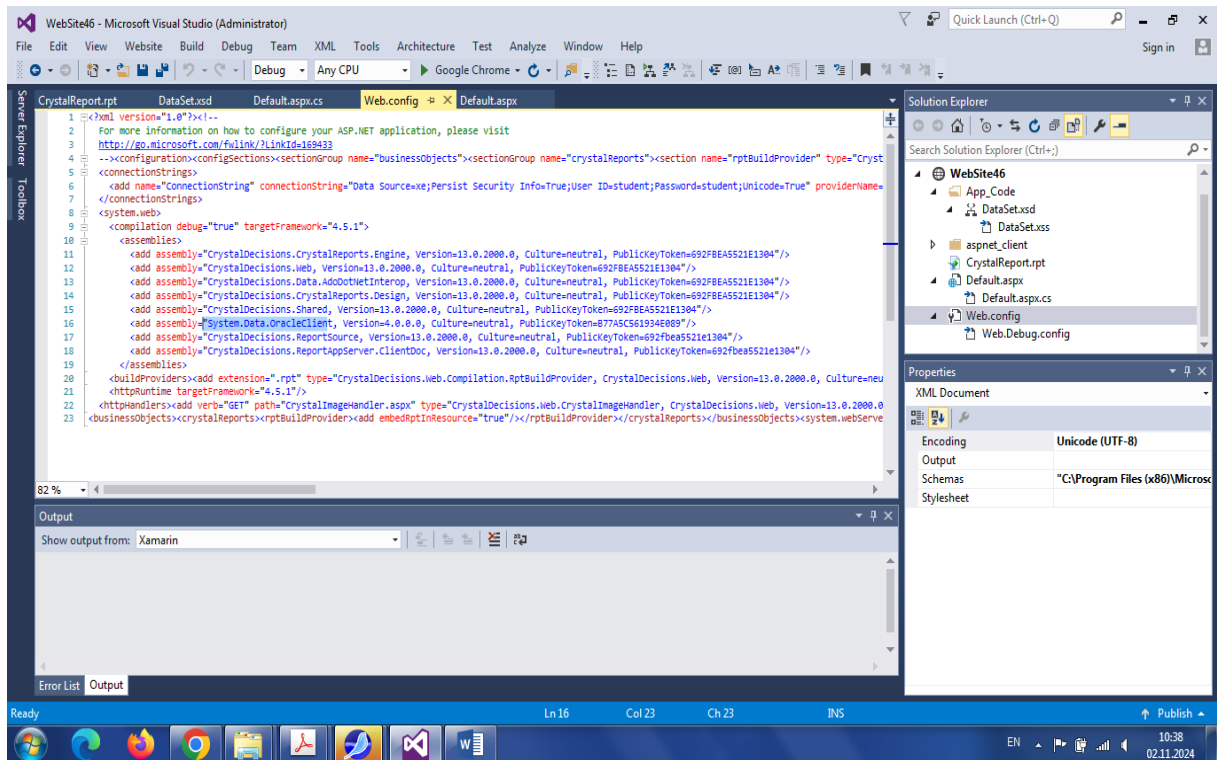


Fig. 3. References – in fisier Web.config din Solution

Cod C# aplicatie:

```

using System;
using System.Collections.Generic;
using System.Linq;
using System.Web;
using System.Web.UI;
using System.Web.UI.WebControls;
//using Oracle.Web;
using System.Data;
using CrystalDecisions.CrystalReports.Engine;
using System.Data.OracleClient;
using CrystalDecisions.Shared;

public partial class _Default : System.Web.UI.Page
{
    OracleConnection cn;
    OracleDataAdapter da;
    DataSet ds;
    String strSQL;
    protected void Page_Load(object sender, EventArgs e)
    {
        TextBox1.Focus();
    }

    protected void Button1_Click(object sender, EventArgs e)
    {
        try
        {

```

```

        cn = new OracleConnection("DATA SOURCE = localhost:1521 / xe; PASSWORD =
student; USER ID = STUDENT");
        strSQL = "SELECT * FROM test where id>" + TextBox1.Text;
        da = new OracleDataAdapter(strSQL, cn);
        ds = new DataSet();
        da.Fill(ds, "tabela");
        GridView1.DataSource = ds.Tables["tabela"].DefaultView;
        GridView1.DataBind(); ReportDocument raport = new ReportDocument();
        string cale = Server.MapPath("CrystalReport.rpt");
        raport.Load(cale);
        raport.SetDataSource(ds.Tables["tabela"]);
        CrystalReportViewer1.ReportSource = raport;

//generare PDF
        DiskFileDestinationOptions fisier = new DiskFileDestinationOptions();
        raport.ExportOptions.ExportDestinationType =
ExportDestinationType.DiskFile;
        raport.ExportOptions.ExportFormatType =
ExportFormatType.PortableDocFormat;
        fisier.DiskFileName = Server.MapPath("fisier1.pdf");
        raport.ExportOptions.DestinationOptions = fisier;
        raport.Export();
        Label1.Text = "OK";

    }
    catch (Exception ex)
    {
        Label1.Text = "error" + ex.ToString();
    }
}
}
}

```